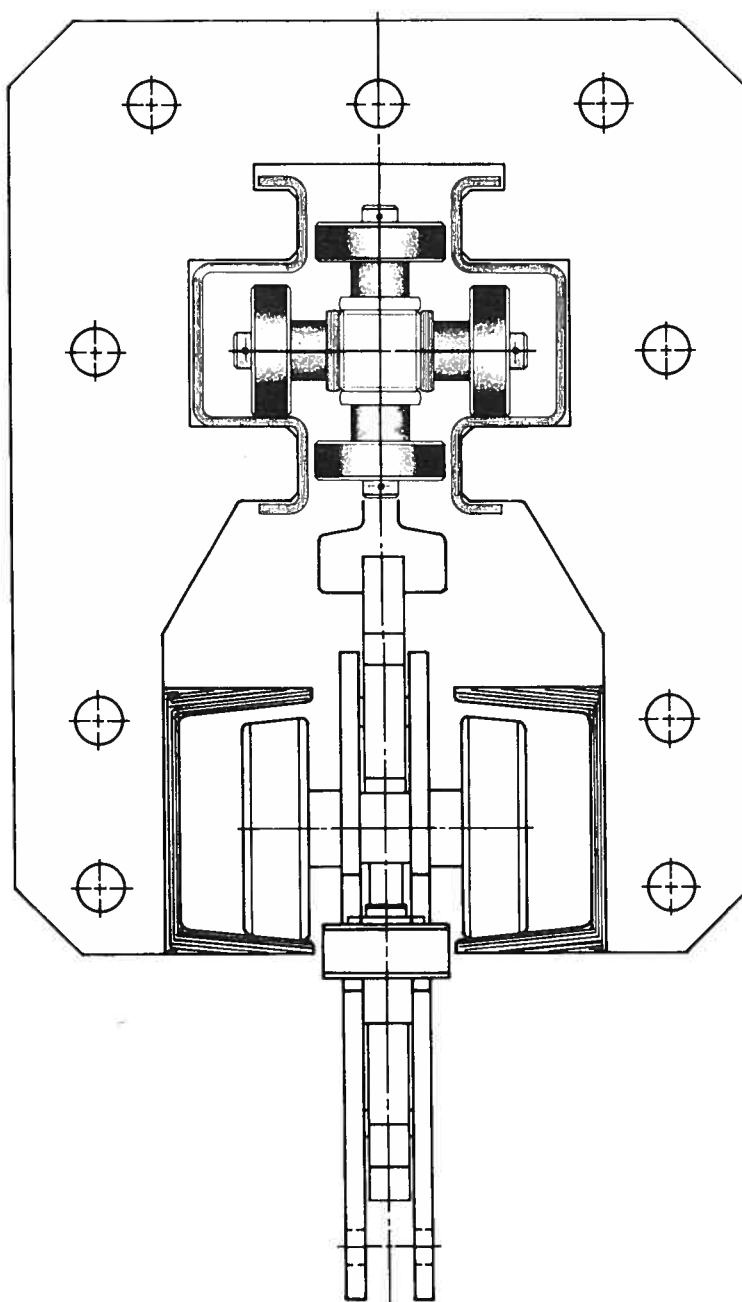


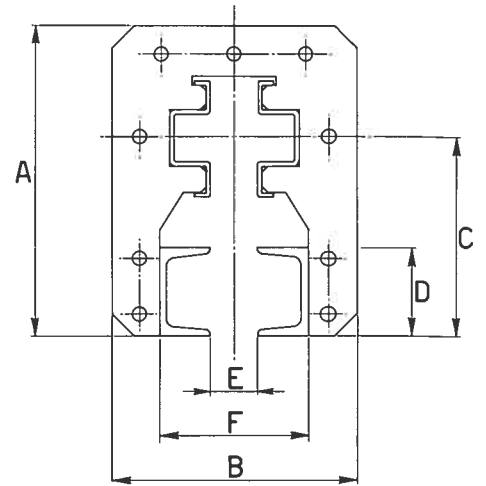
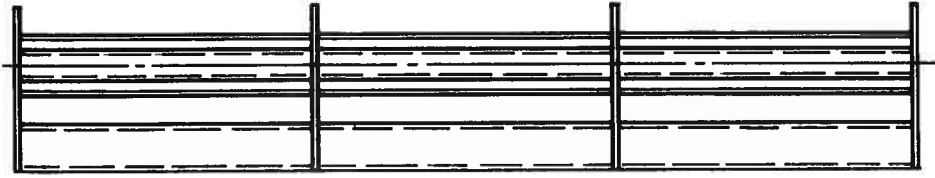
# **CONVOGLIATORI BIROTAIA**

---

## **B.R. KX 150**

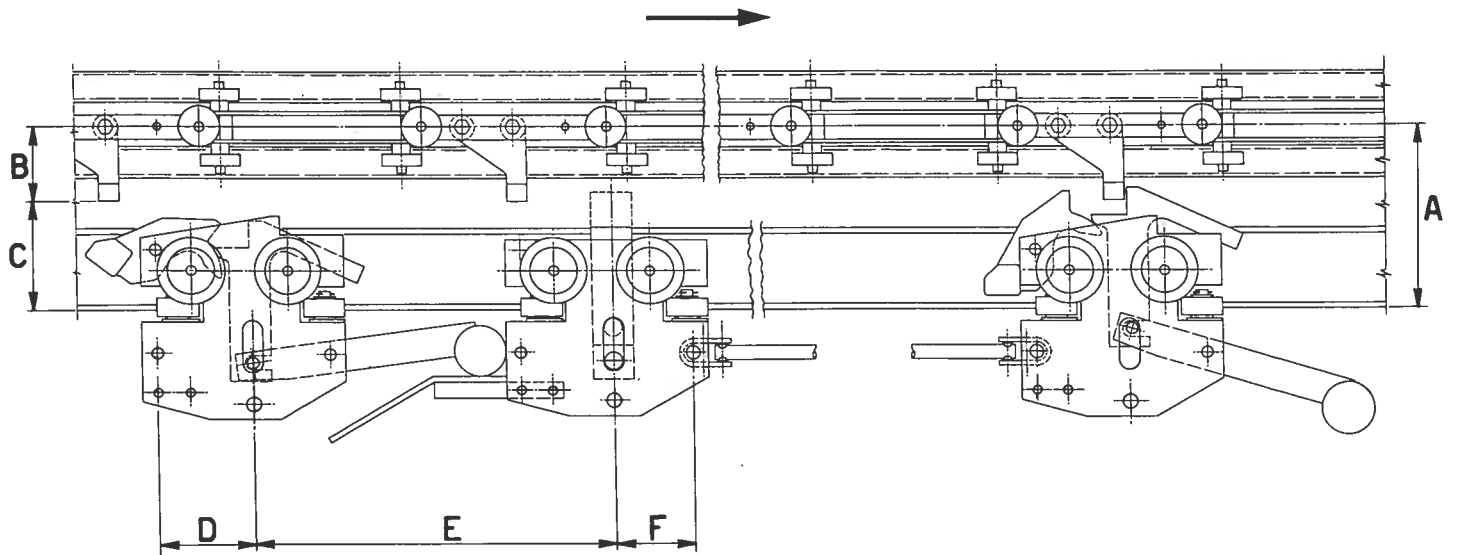


# LINEA RETTILINEA BIROTAIA



TIPO	A	B	C	D	E	F
BRKX 150	280	220	180	80	42	132

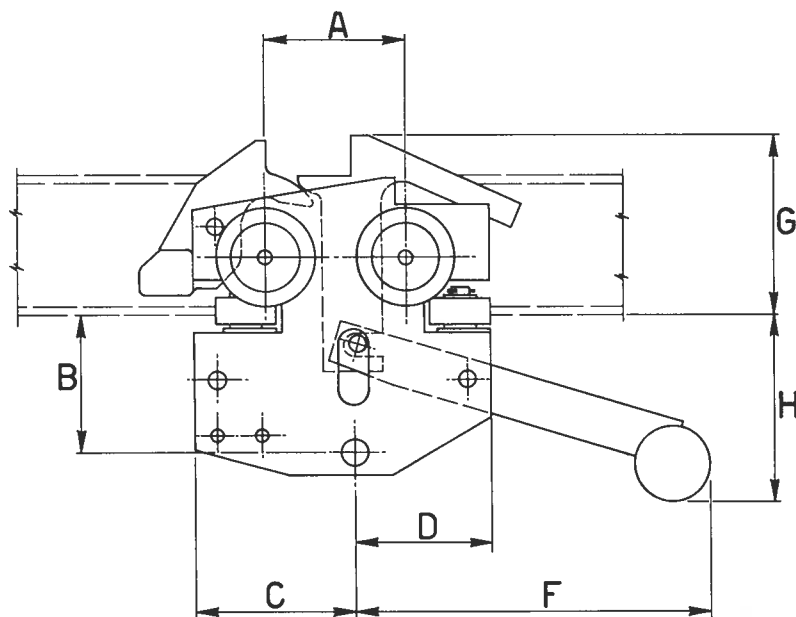
# CARRELLI PER LINEA BIROTAIA



TIPO	A	B	C	D	E	F
BRKX 150	178	72	106	89,5	350	75

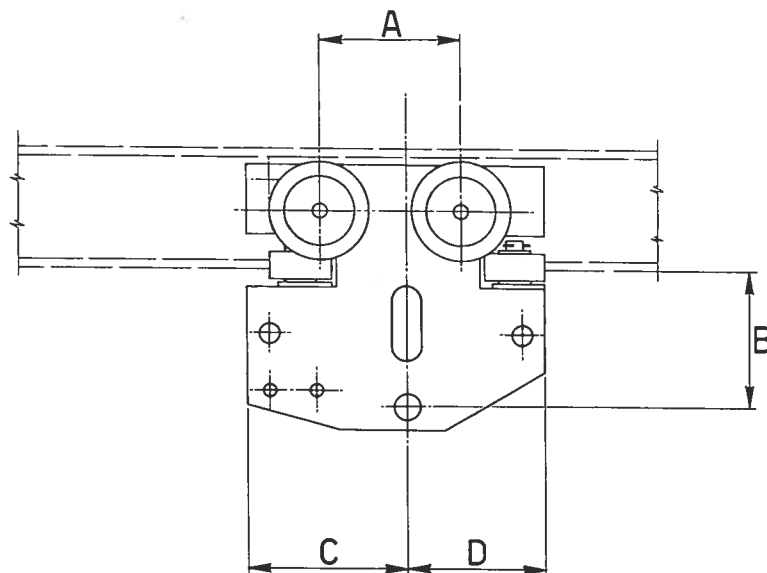
# CARRELLI NORMALIZZATI PER BIROTAIA KX 150

## CARRELLO ANTERIORE



TIPO	A	B	C	D	E	F	G	H	I	L
BRKX 150	92	88	104,5	90	—	235	119	122	—	—

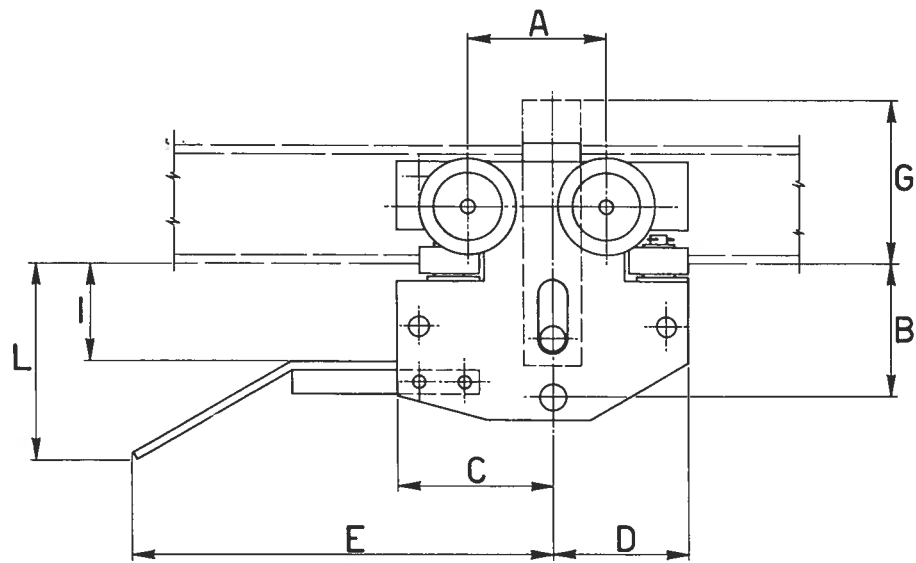
## CARRELLO INTERMEDIO



TIPO	A	B	C	D	E	F	G	H	I	L
BRKX 150	92	88	104,5	90	—	—	—	—	—	—

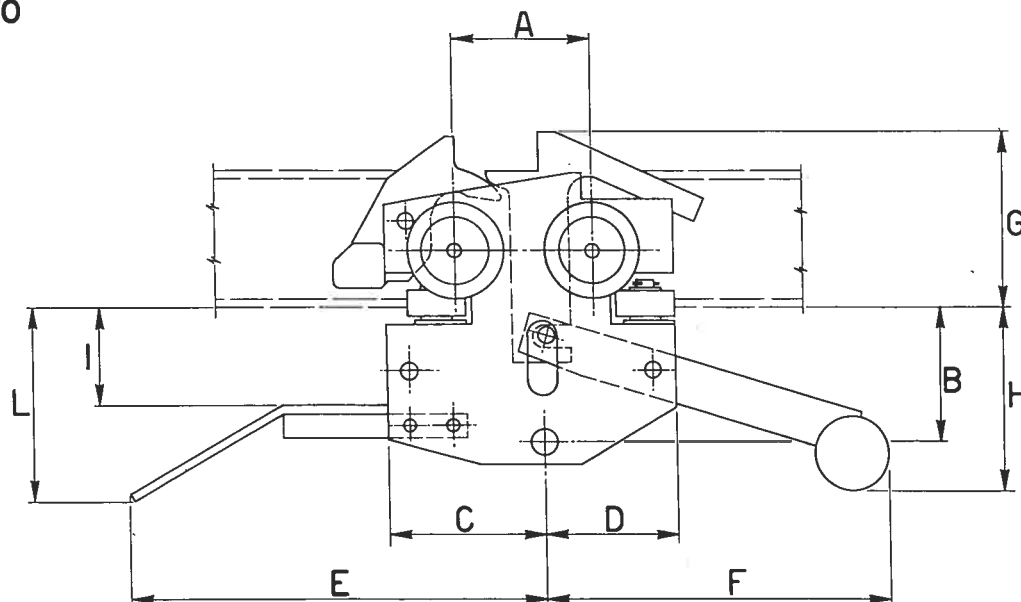
# CARRELLI NORMALIZZATI PER BIROTAIA KX 150

## CARRELLO POSTERIORE



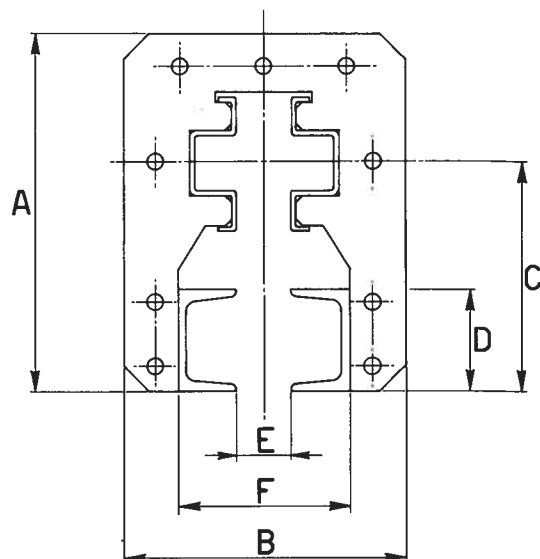
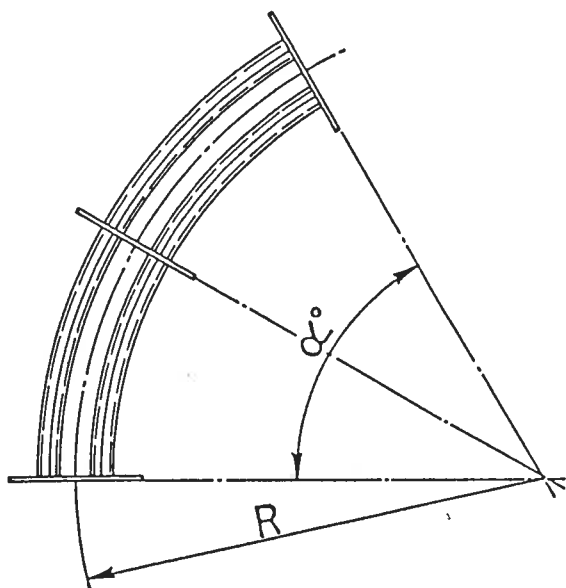
TIPO	A	B	C	D	E	F	G	H	I	L
BRKX 150	92	88	104,5	90	255	—	110	—	62	128

## CARRELLO COMBINATO



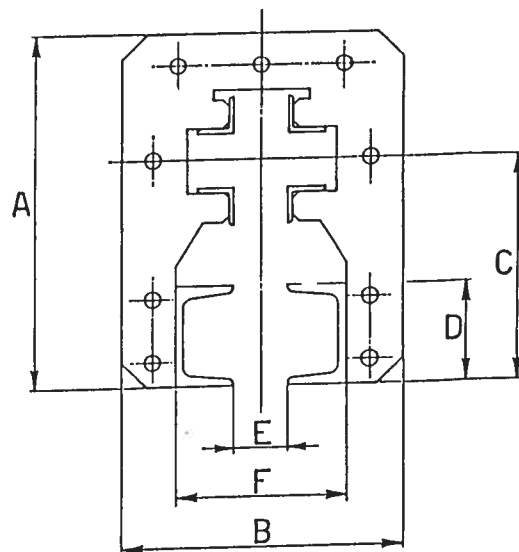
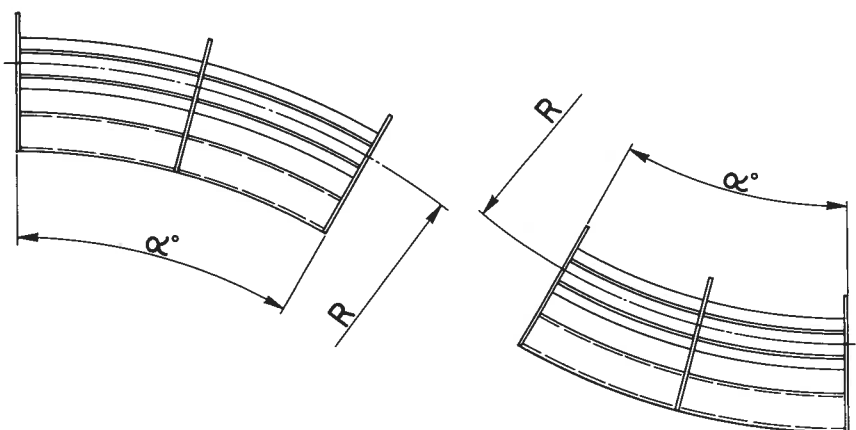
TIPO	A	B	C	D	E	F	G	H	I	L
BRKX 150	92	88	104,5	90	255	235	119	122	62	128

# CURVE ORIZZONTALI



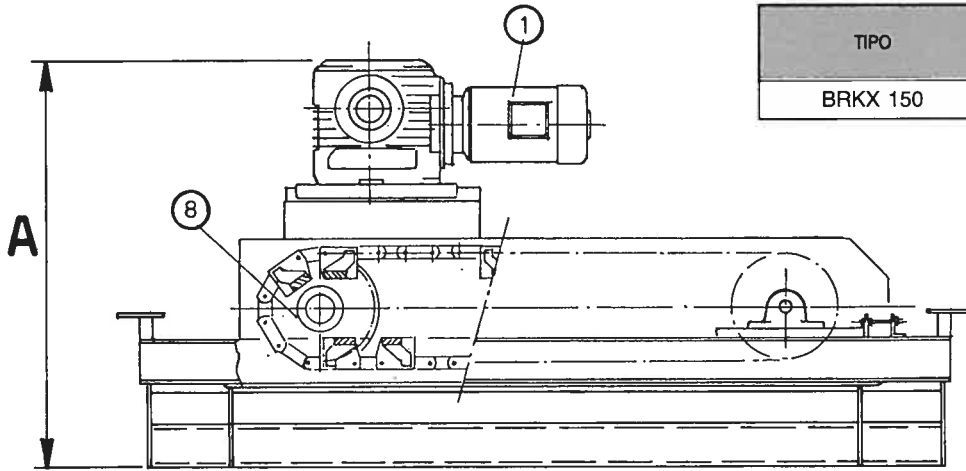
BRKX 150	
R	700 - 1000 - 1250 - 1500
$\alpha$	15 - 30 - 45 - 60 - 90 - 180

# DISLIVELLI VERTICALI

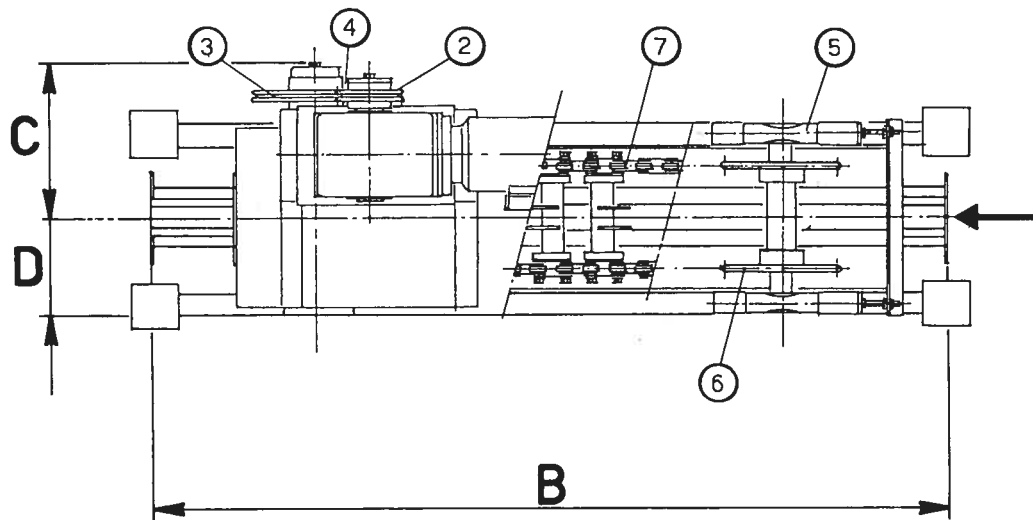


BRKX 150	
$\alpha$	15 - 30
R	1430
R <sub>1</sub>	1150

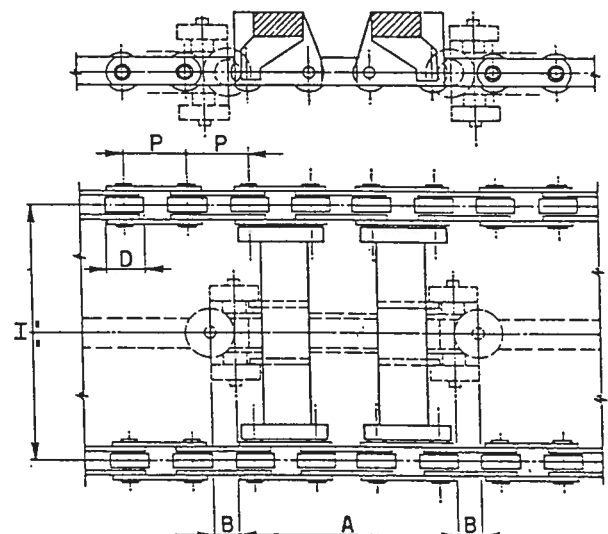
# COMANDO CATERPILLAR



TIPO	A	B	C	D
BRKX 150	1200	1600	205	320

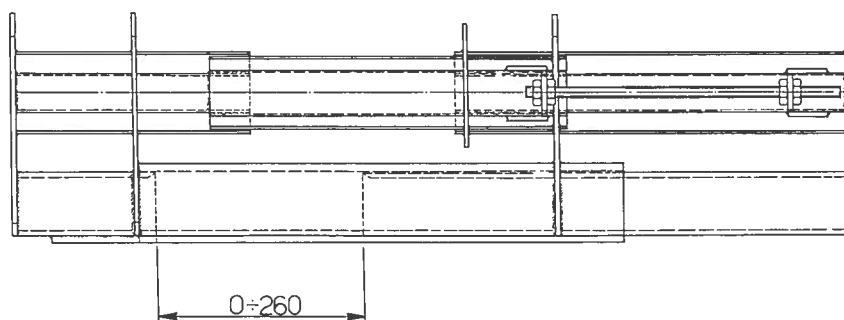


## CATENA PER COMANDO CATERPILLAR



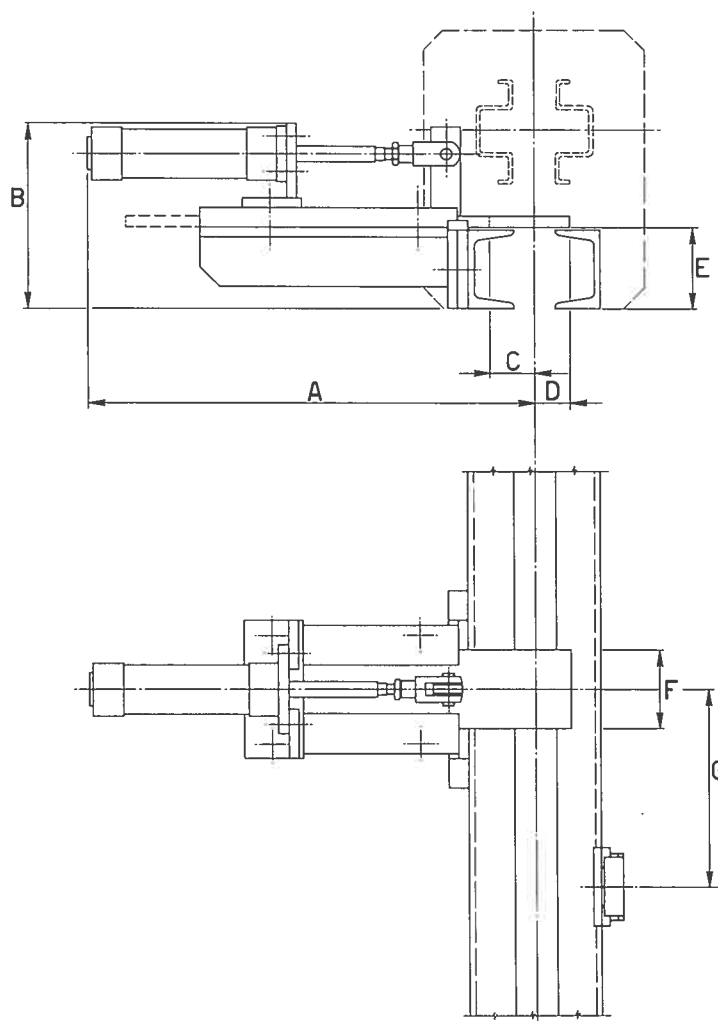
TIPO	A	B	D	I	P
BRKX 150	180	20	31	210	50

# TENDITORE A VITE



TIPO	CORSA MINIMA	CORSA MASSIMA
BRKX 150	800	1060

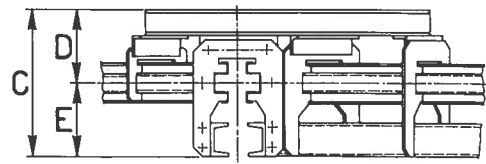
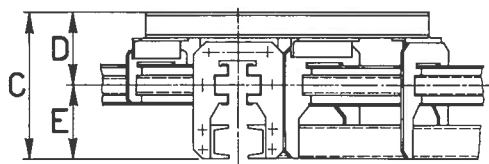
# STAZIONE DI STOP



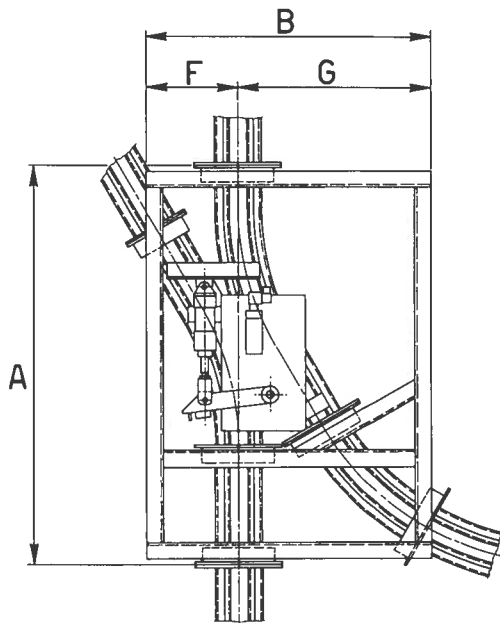
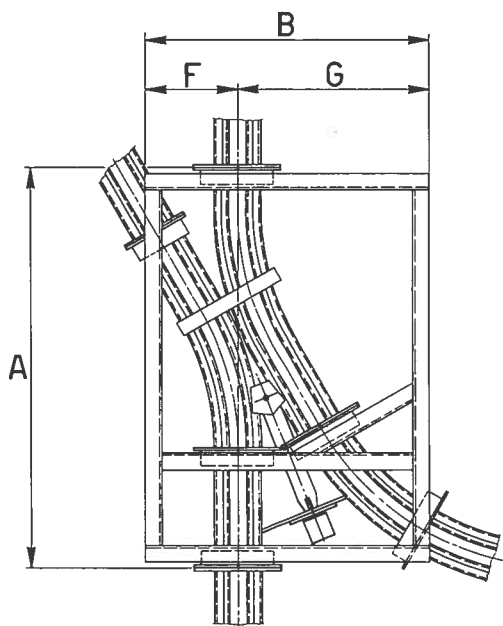
TIPO	BRKX 150
A	450
B	200
C	44
D	36
E	83
F	80
G	195



# SCAMBI

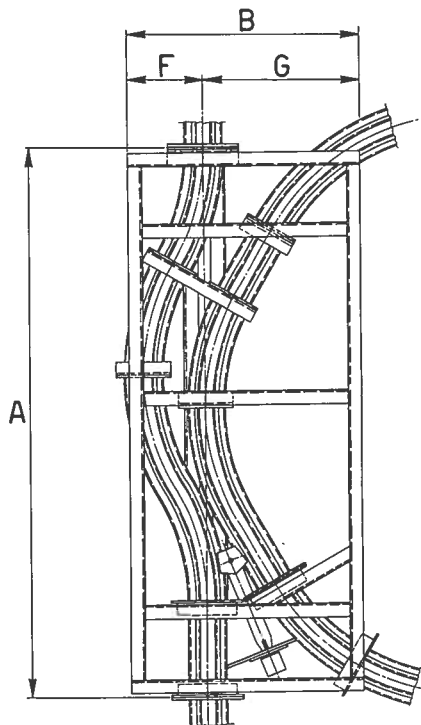
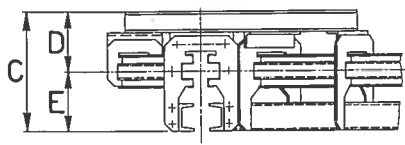


TIPO	BRKX 150
A	996
B	700
C	355
D	175
E	180
F	230
G	470



**TIPO FOLLE .A**

**TIPO COMANDATO**

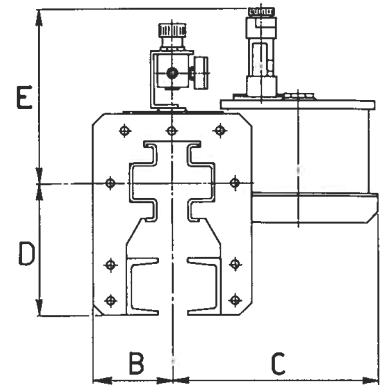
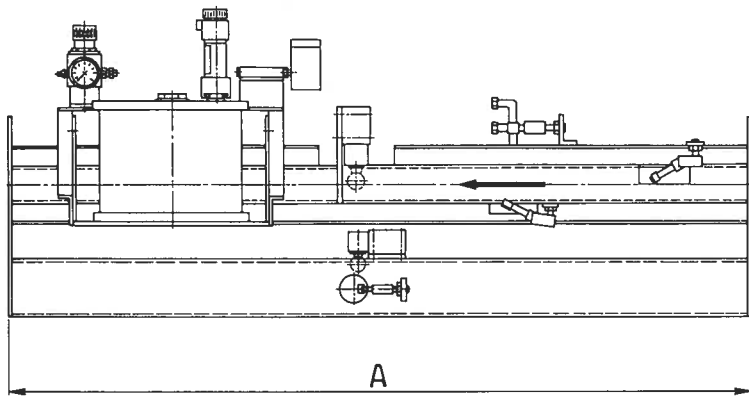


TIPO	BRKX 150
A	1696
B	700
C	355
D	175
E	180
F	230
G	470

**TIPO FOLLE .B**

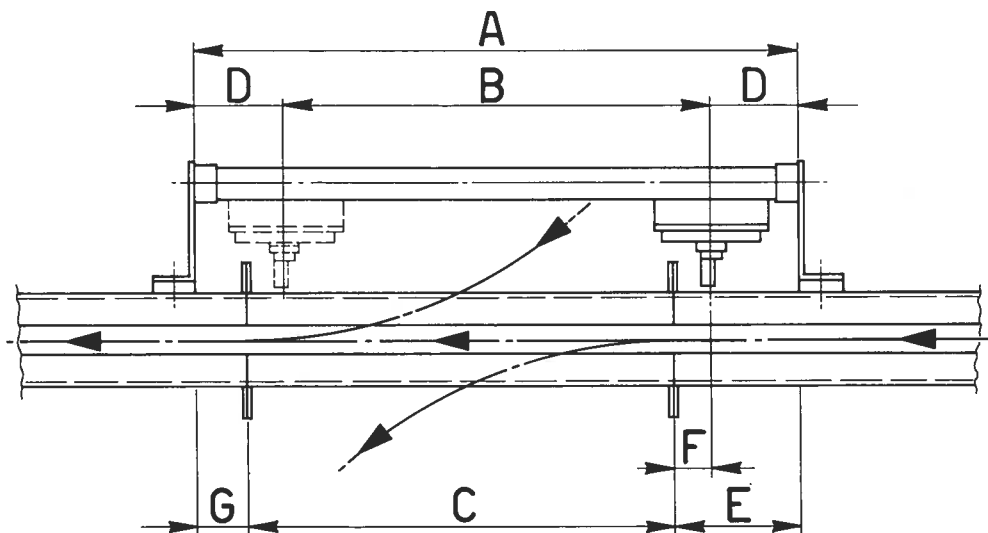


# LUBRIFICATORE



TIPO	A	B	C	D	E
BRKX 150	1000	110	280	180	260

# TRASFERITORE DIRETTO



TIPO	INGOMBRO TRASFERITORE A	CORSE NORMALIZZATE B	C	D	E	F	G
BRKX 150	850+1250	600+1000	600+1000	125	180	55	70