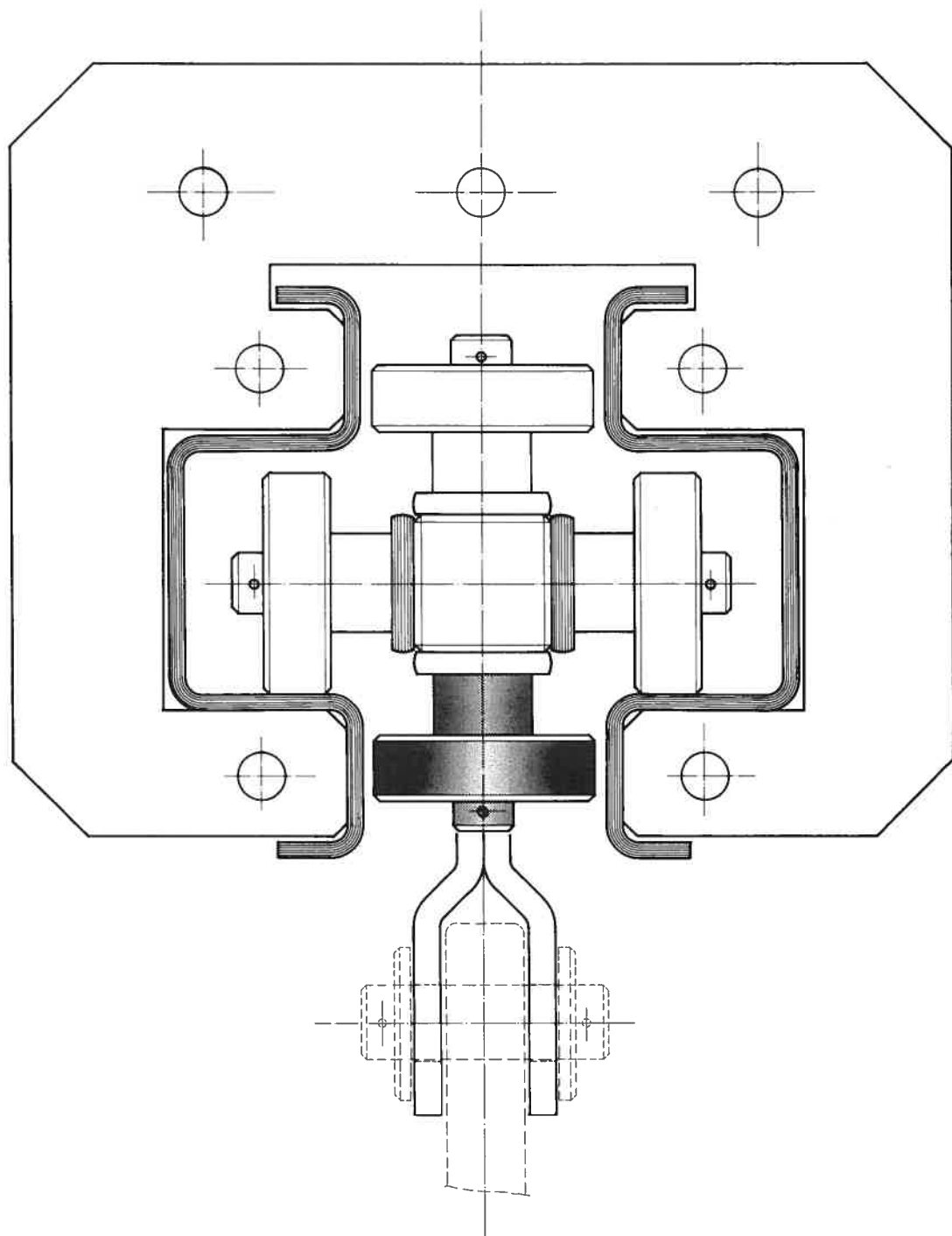
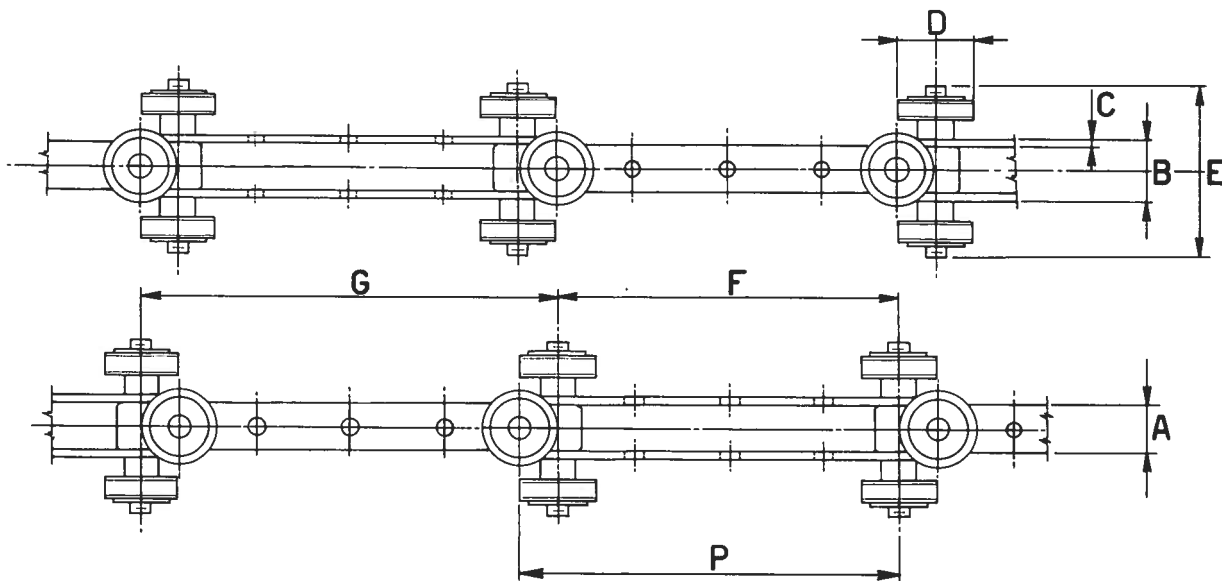


# ***CONVOGLIATORI CON CATENA BIPLANARE***

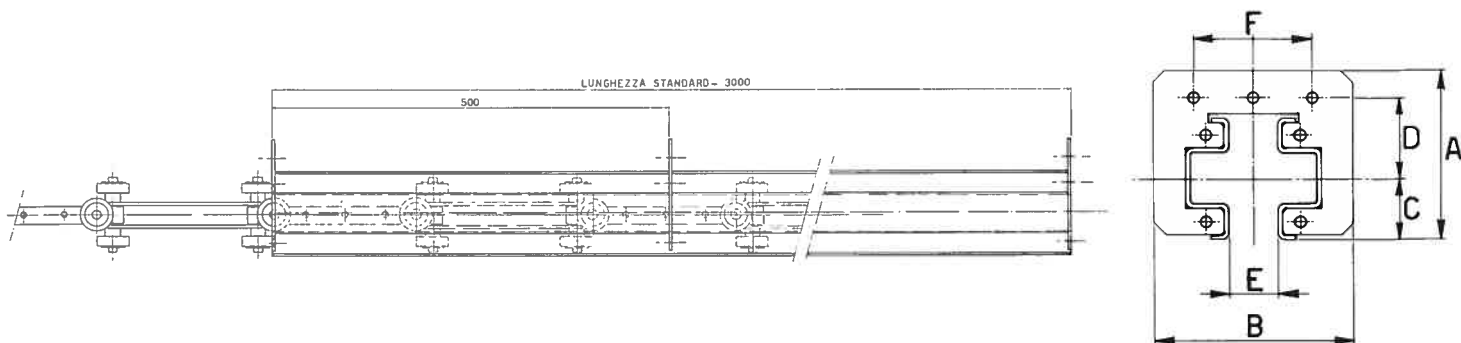


# CATENA SNODATA



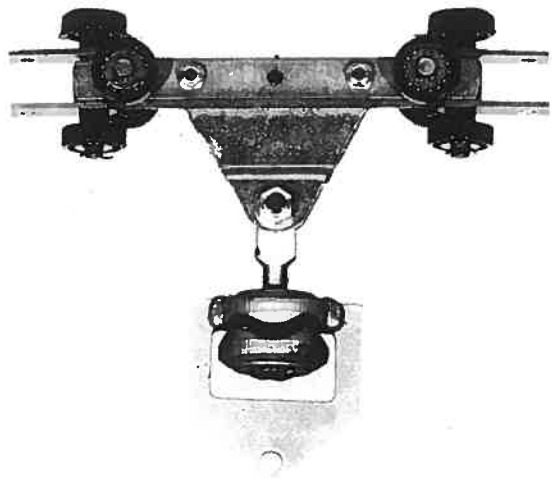
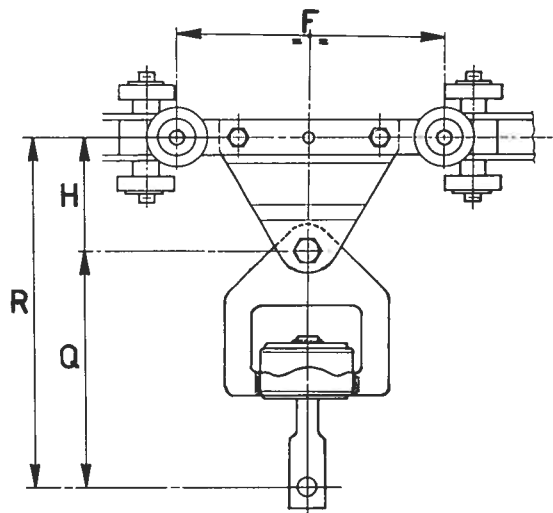
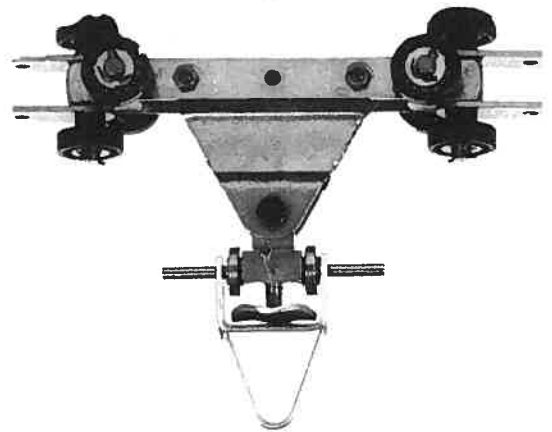
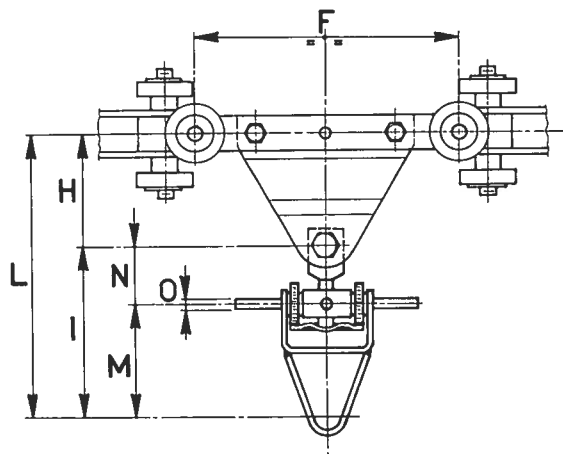
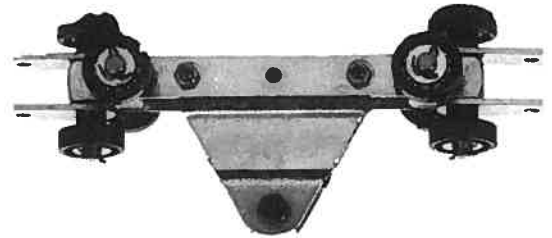
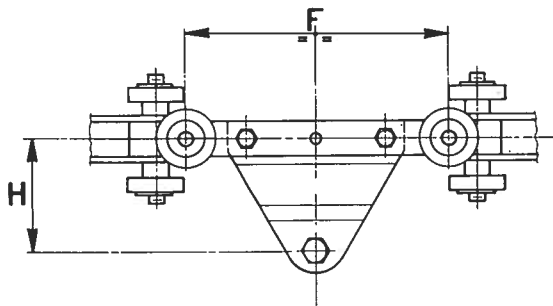
TIPO		DIMENSIONI							CARICHI		
CATENA	PASSO P	RULLO D	LARGHEZZA MAGLIA		SPESSORE MAGLIA C	INGOMBRO ESTERNO E	DISTANZA RULLI		TIRO MASSIMO	CARICO DI ROTTURA	PESO Kg./mt.
			INTERNA A	ESTERNA B			INTERNA F	ESTERNA G			
CI 200/40	200	40	25	33	4	91	180	220	550	7000	5
CI 200/45	200	45	30	38	4	103	180	220	550	7000	8
CI 200/45R	200	45	30	42	6	107	180	220	1000	11000	9

# ROTAIA RETTILINEA



TIPO	DIMENSIONI					
CONVOGLIATORE	INGOMBRO ALTEZZA A	INGOMBRO LARGHEZZA B	DISTANZA ASSE-BASE BINARIO C	DISTANZA ASSE-FORI BINARIO D	LARGHEZZA INTERNA BINARIO E	DISTANZA FORI F
CMS 200/40	144	170	52	69	44	100
CMS 200/45	175	210	64,5	85,5	49	135

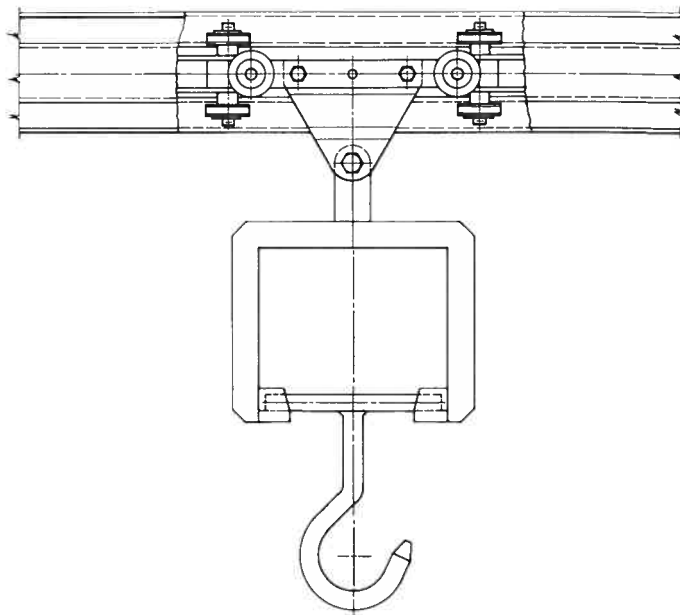
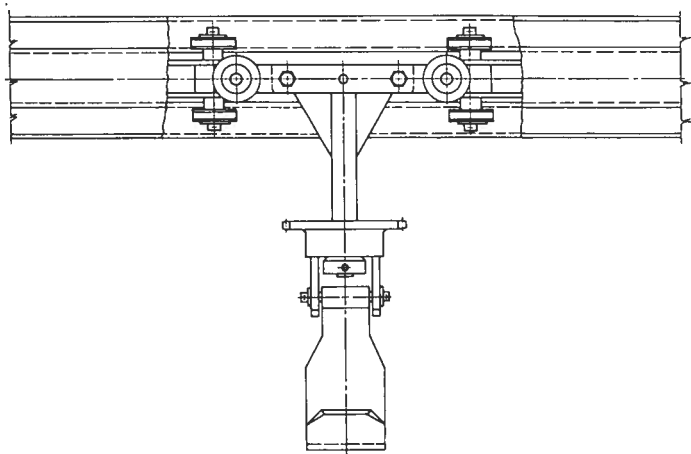
# APPENDINI



CATENA	F	H	I	L	M	N	O	Q	R
CI 200/40	180	80	120	200	80	40	8	160	250
CI 200/45	180	90	120	210	80	40	8	160	250



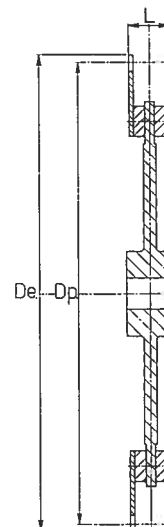
# APPENDINI CON APPLICAZIONI PARTICOLARI



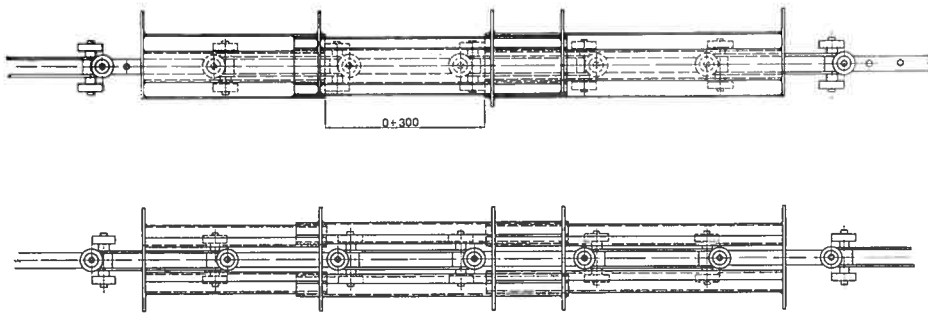
## RUOTE DENTATE PER CATENA SNODATA

TIPO: CI 200/40 - CI 200/45

RUOTA Z.	5/10	6/12	8/16	10/20
Dp.	647,2	772,8	1025,2	1278,4
De.	671,2	796,8	1049,2	1302,4
L	CI 200/40	54	54	54
	CI 200/45	59	59	59

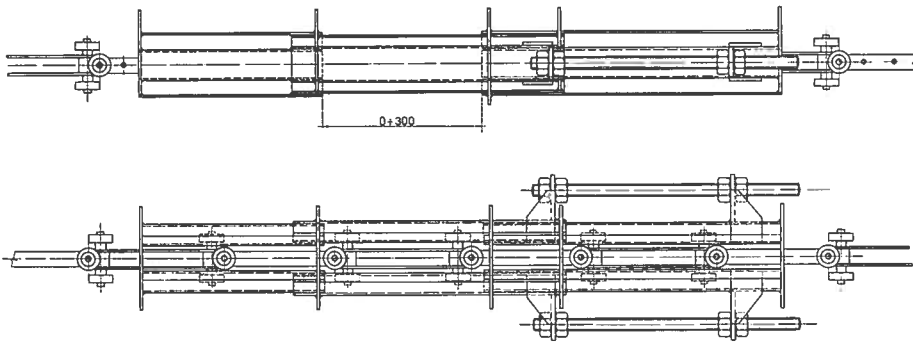


# GIUNTI DI DILATAZIONE



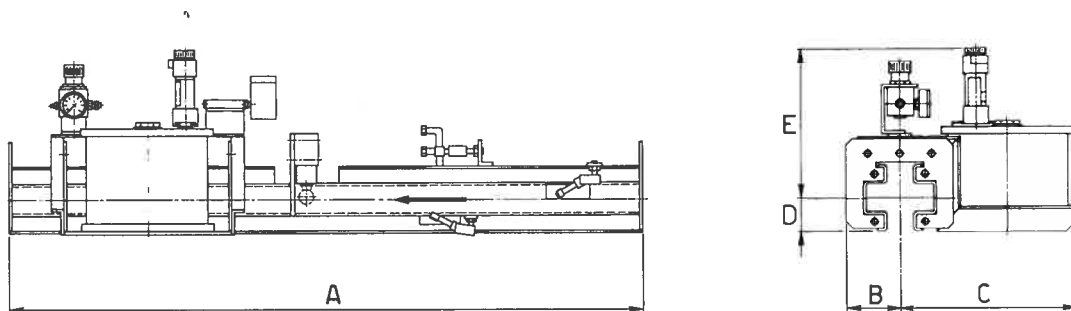
TIPO	CORSA MINIMA	CORSA MASSIMA
CMS 200/40	800	1100

# TENDITORI A VITE



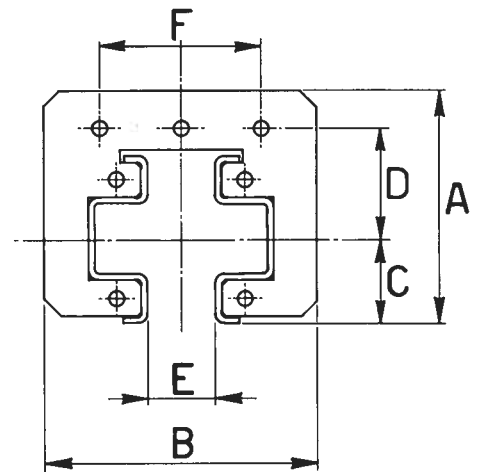
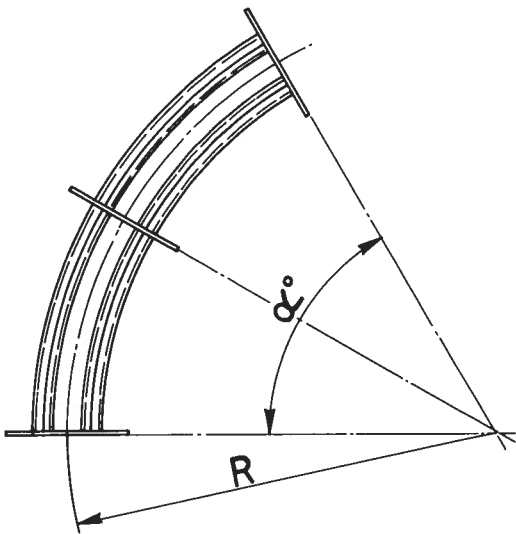
TIPO	CORSA MINIMA	CORSA MASSIMA
CMS 200/40	800	1100

# LUBRIFICATORI



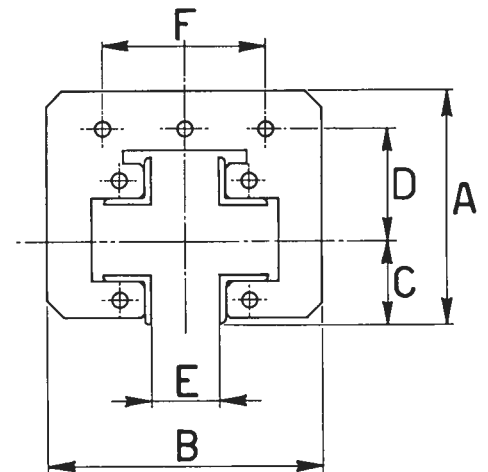
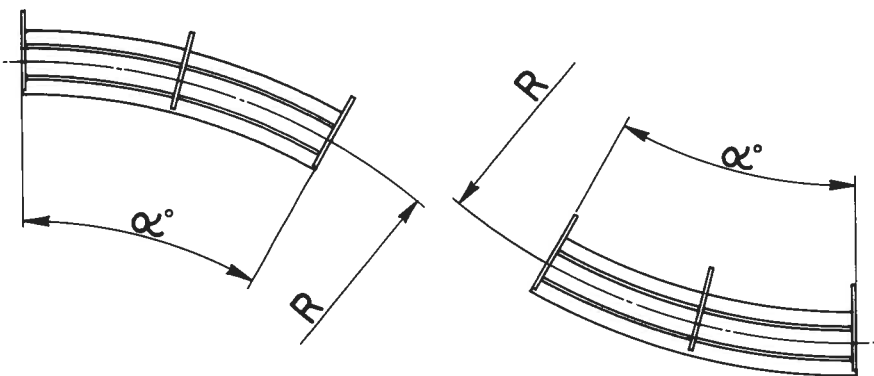
TIPO	A	B	C	D	E
CMS 200/40	1000	85	280	52	250
CMS 200/45	1000	105	295	65	265

# CURVE ORIZZONTALI



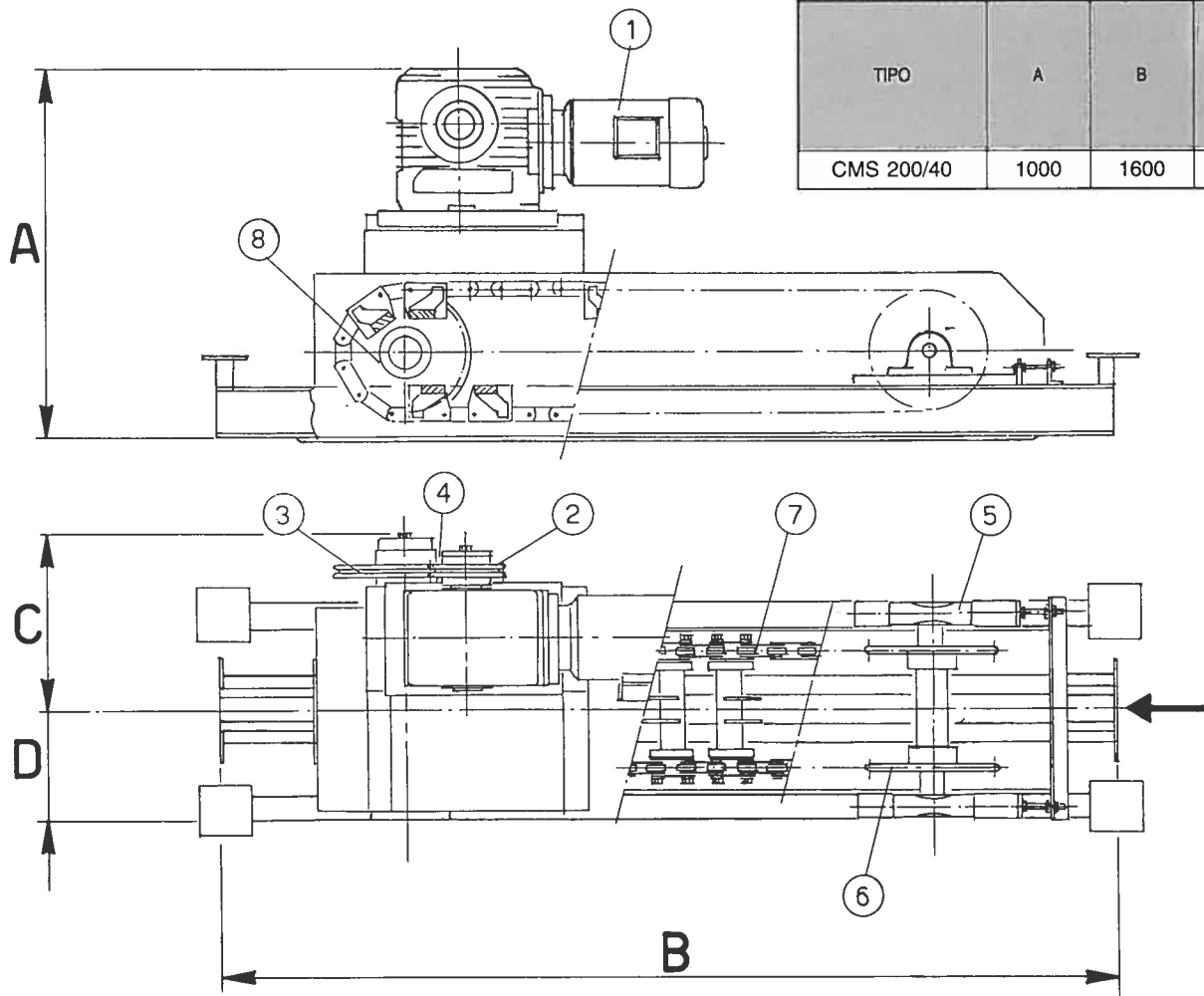
CMS 200/40		CMS 200/45	
R	700 - 1000	R	700 - 1000
$\alpha^\circ$	15 - 30 - 45 - 60 - 90 - 180	$\alpha^\circ$	15 - 30 - 45 - 60 - 90 - 180

# DISLIVELLI VERTICALI



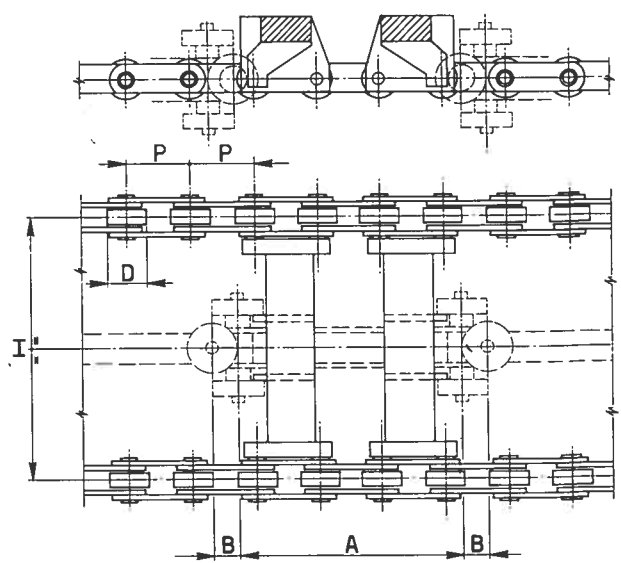
CMS 200/40		CMS 200/45	
R	700 - 1000	R	700 - 1000
$\alpha^\circ$	15 - 30 - 45 - 60 - 90 - 180	$\alpha^\circ$	15 - 30 - 45 - 60 - 90 - 180

# COMANDO CATERPILLAR



TIPO	A	B	C	D
CMS 200/40	1000	1600	205	320

# CATENA PER COMANDO CATERPILLAR

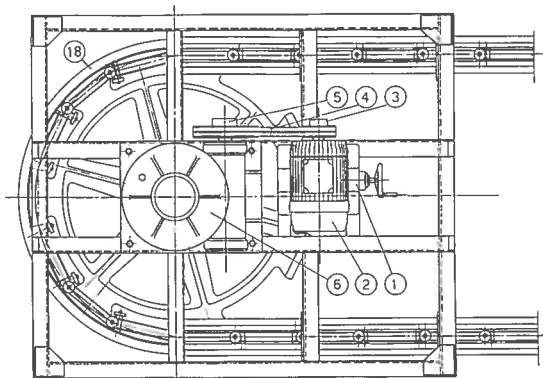
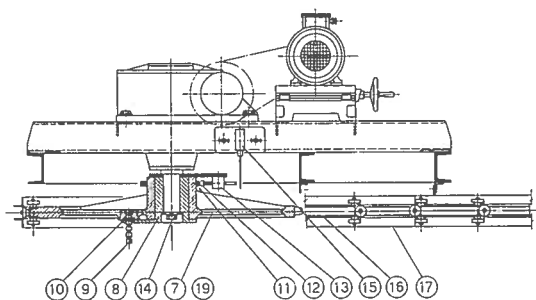


TIPO	A	B	D	I	P
CMS 200/40	180	20	31	210	50
CMS 200/45	180	20	31	230	50

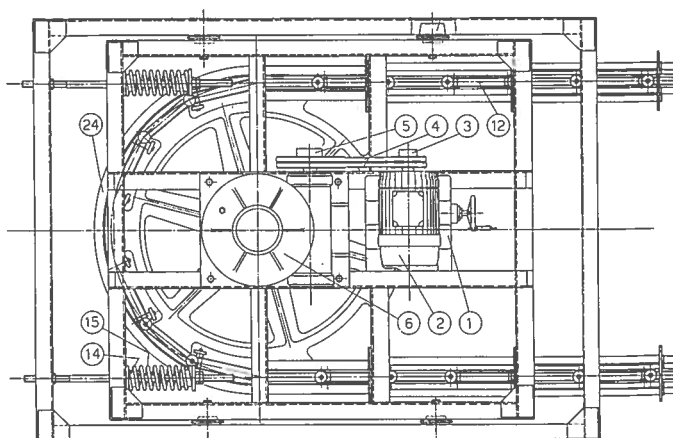
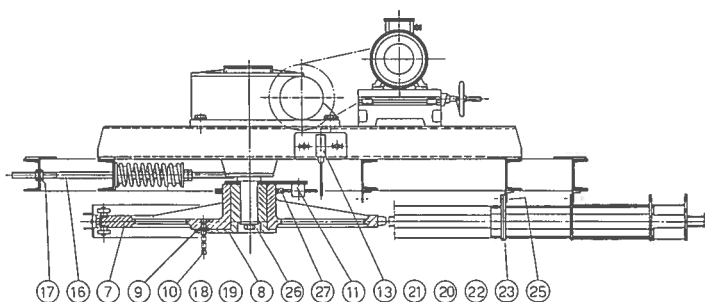


# GRUPPO COMANDO A RUOTA

A 180° (90°)

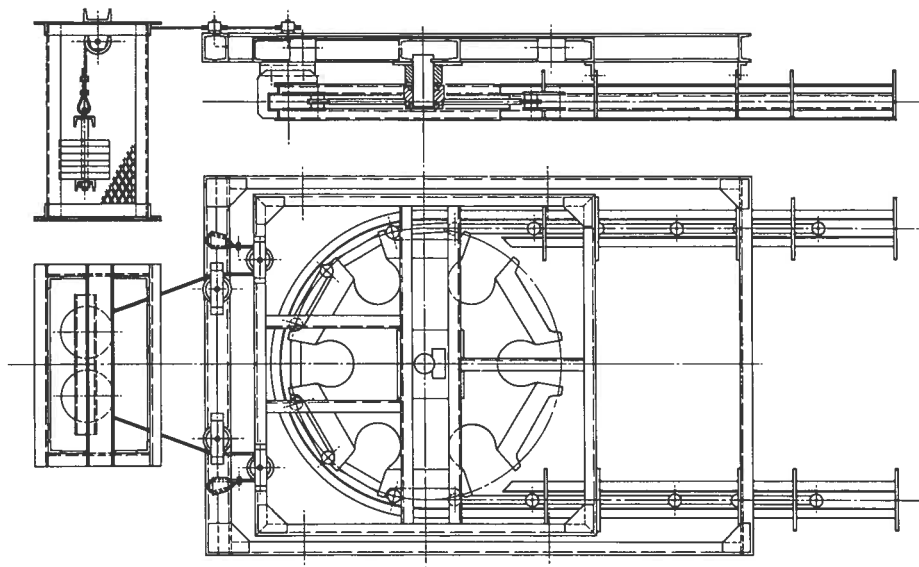


# GRUPPO COMANDO TENDITORE A RUOTA

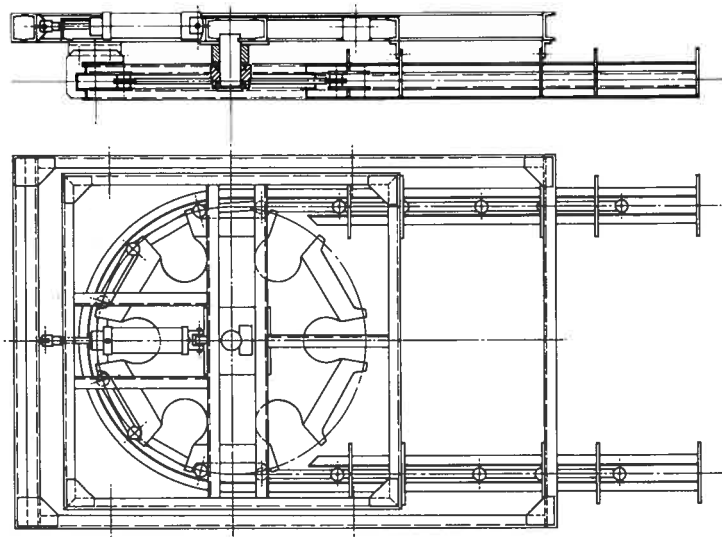




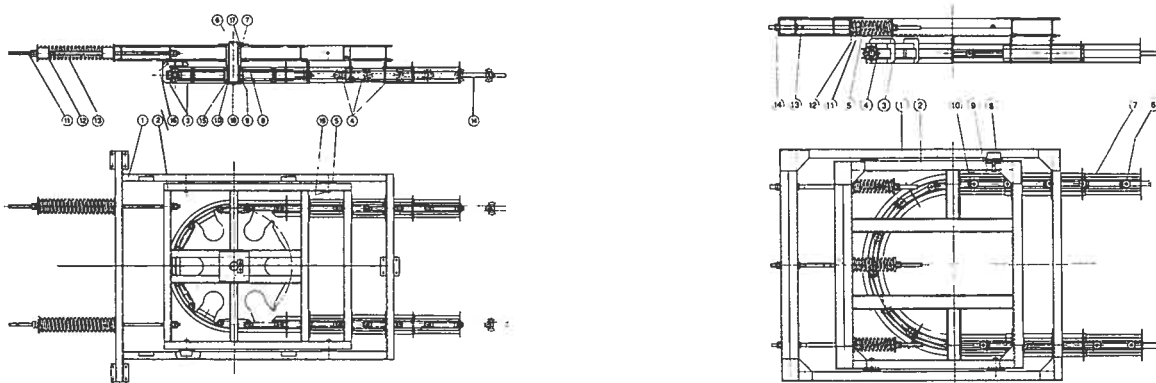
## TENDITORE A CONTRAPPESI



## TENDITORE A CILINDRI PNEUMATICI

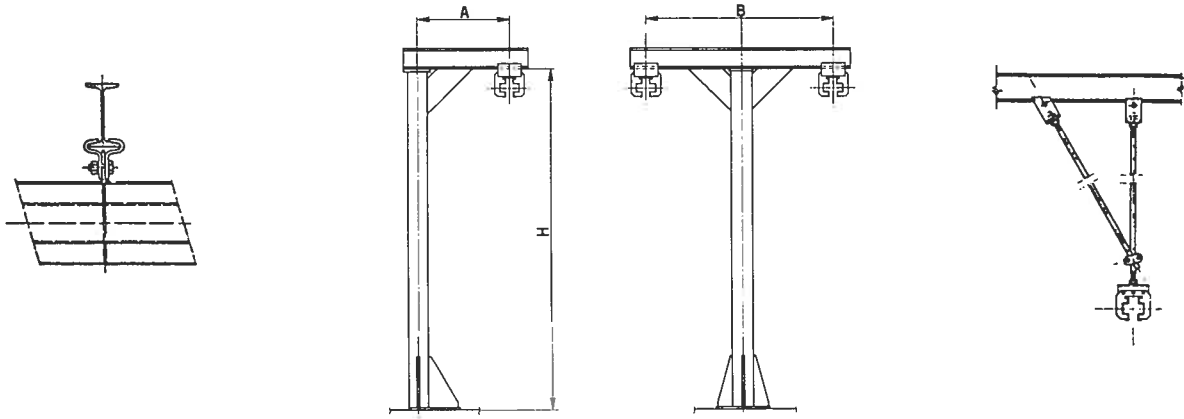


## TENDITORE A MOLLE





# SOSPENSIONI



# RETI DI PROTEZIONE

